



Huntingdon Academy

A L.E.A.D. Academy

# KS 2 ASSEMBLY



# Our Vision:

*Individual Growth.  
Empowerment for All.*



## Our Values:



## Our Behaviours:



# WHAT ARE PROTECTED CHARACTERISTICS?

The nine protected characteristics are:

- age
- disability
- gender reassignment
- marriage and civil partnership
- pregnancy and maternity
- race
- religion or belief
- sex
- sexual orientation

## WHY WERE THEY TREATED UNFAIRLY?





# UK schools record more than 60,000 racist incidents in five years



incidents - a racist incident being defined as any situation perceived to be racist by the alleged victim or any other person, including unintentional racism.

# WHAT IS RACISM?

Racism is when people are not given respect, their rights, personal dignity, or value because of their race.

Have you ever heard someone negatively use a word to describe someone because of their skin color?

Why do you think people do this? Why is this harmful?

**This is racism. Racism can happen anywhere. Racism *is* never acceptable.**

# IDENTITY AND RACE

What makes you who you are? Is it your interests and hobbies? Your talents? Is it your beliefs or appearance?

Everyone has an identity that is dependent on many factors. Race is one of those factors.

A race is a grouping of people who share some of the same physical features (such as skin color, hair texture, and facial features) and non-physical features (such as culture, history, religious beliefs, and language).



# THE EQUALITY ACT 2010

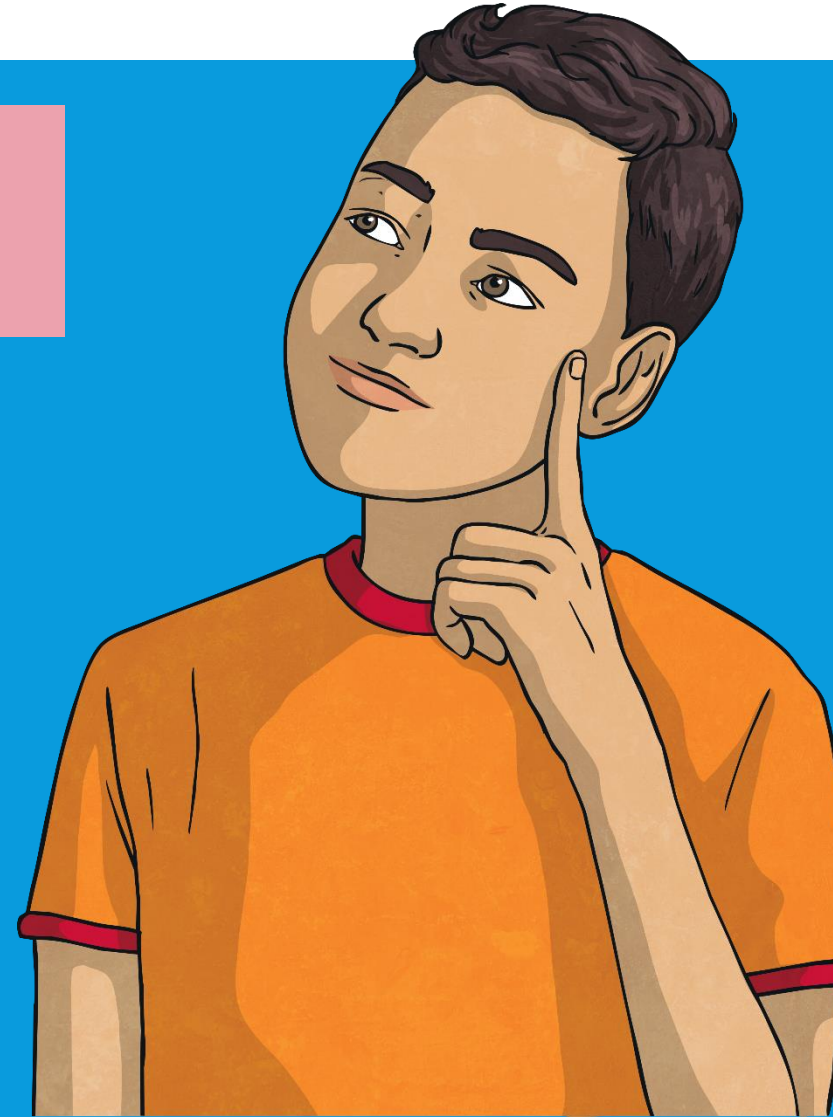
Lays out a set of legal terms to protect the rights of individuals  
It aims to advance equality of opportunity for all.

It provides Britain with a discrimination law that prevents  
individuals from facing unfair treatment.



# WHAT WOULD YOU DO?

- If you thought you were being bullied or discriminated against, **what do you think you should do?**
- If you heard someone being unkind at school, **who would you tell? What would you do?**
- If you heard someone being unkind at home, **who would you tell? What would you do?**





# IN WHAT WAY IS RACIST BEHAVIOR NOT IN LINE WITH OUR SCHOOL VALUES?

## COMMUNICATION

At Huntingdon Academy we value communication

To apply the value of communication to your behaviour, you need to:

- ★ Use vocabulary precisely and articulate your opinions in full sentences
- ★ Communicate high standards in both your appearance and your work
- ★ Use evidence and examples to support your thoughts and ideas
- ★ Explain your thinking to another person and present your ideas to an audience
- ★ Express your feelings in a controlled and measured way considering how your words may impact on others
- ★ Ask powerful questions and questions to extend your thinking

## LISTENING

At Huntingdon Academy we value listening

To apply the value of listening to your behaviour, you need to:

- ★ Actively listen when people are talking
- ★ Let people finish their sentences
- ★ Show appropriate body language for listening
- ★ Be open minded to other people's thoughts and ideas
- ★ Have empathy for others and their feelings and seek to understand
- ★ Listen to learn and develop your own or your team's ideas further

## COLLABORATION

At Huntingdon Academy we value collaboration

To apply the value of collaboration to your behaviour, you need to:

- ★ Consider how best to contribute when working with others within our school and with the wider world and use initiative
- ★ Ensure others have a turn to speak
- ★ Consider others' ideas, opinions and feelings and use them to develop and add to your own
- ★ Compromise within a team and resolve conflict using negotiation
- ★ Know when and how to seek support
- ★ Take responsibility for yourself and the role you play in a team, school and within society

## THINKING

At Huntingdon Academy we value thinking

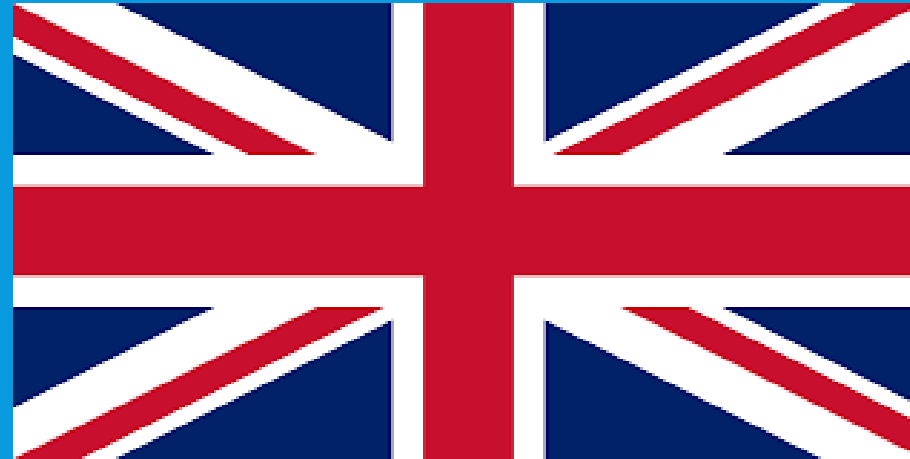
To apply the value of thinking to your behaviour, you need to:

- ★ Reflect on your strengths, learn and grow from mistakes and set yourself meaningful goals
- ★ Embrace new challenges and consider strategies to overcome obstacles in work and in life. Know when to think logically and when to think creatively.
- ★ Think carefully about how to manage emotions and understand your feelings. Understand the relationship between thoughts, feelings and actions.
- ★ Make links within learning and with the wider world and have a curious mindset
- ★ Think about questions you would like to ask yourself or others.
- ★ Have your own thoughts and ideas.

# IN WHAT WAY IS RACIST BEHAVIOUR NOT IN OINE WITH OUR BRITISH VALUES?

## Mutual Respect

- Treating others as you want to be treated
- Respect for each other
- Working together



## Individual Liberty

- Freedom of speech for all
- The right to make our own choices

## Rule of Law

- Understanding rules and why they are important
- Following rules to develop order

## Democracy

- Making decisions together
- The right to an opinion/voice

## Tolerance

- Learning about different faiths and cultures
- Listen to other viewpoints
- Learning about diversity





What we need to do is learn to  
respect and embrace our differences  
until our differences don't make a  
difference in how we are treated.

Yolanda King





“Strength  
lies in differences,  
not in similarities.”

Stephen R. Covey

